

# 9415 xy micro imager (XMI)™

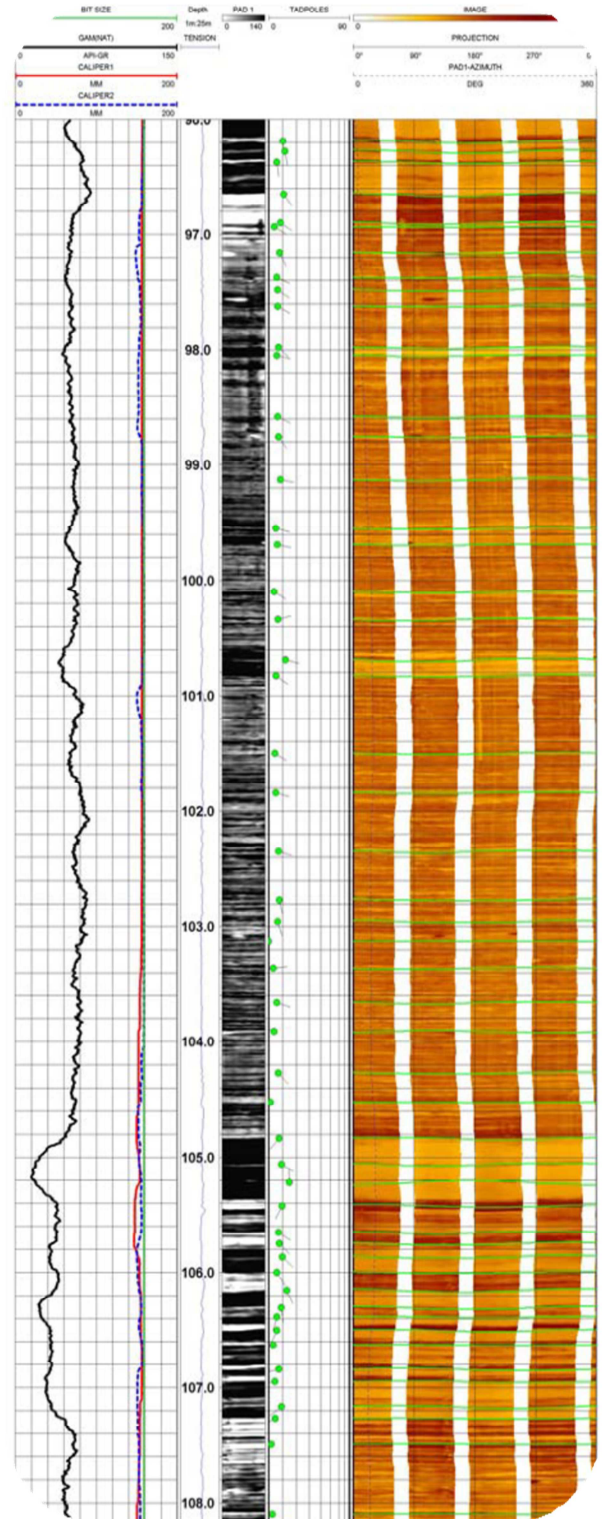


(XMI)

The 9415 Micro-Imager tool uses 4 pad mounted micro-resistivity sensors to image the borehole wall. With precise depth measurements and small sample intervals, the contrast in the borehole wall is shown as an image, similar to the acoustic and optical televiwer tools. Processing of the image allows the end user to measure dip angle and directions. A magnetic deviation package, X-Y Caliper measurements and natural gamma are included.

## 9415 micro-res imager specifications

Length:	4.29 m	14.07 ft
Temperature:	125 °C	257 °F
Diameter:	109.47 mm	4.31 in.
Weight:	74.84 kg	165 lbs.
Pressure:	351 kg/cm2	5,000 psi
Min. Borehole	127 mm	5 in.
Max. Borehole	312.67 mm	12.31 in.
Vertical Resoluton:	3 mm @ 216 m/hr	
Azimuthal Measuring	2.54 mm (36 butons/pad)	0.1in.
Accuracy:	GR +/- 5% ; X-Y Caliper +/- 0.2" Deviation +/- 0.5° Inclination Azimuth +/- 2°	
Borehole Diameter Coverage %	5.0"	91.7%
	5.5"	83.3%
	6.0"	76.4%
	6.5"	70.5%
	7.0"	65.5%



1223 S. 71<sup>st</sup> E. Ave  
Tulsa, OK 74112  
USA

[www.century-geo.com](http://www.century-geo.com)

